

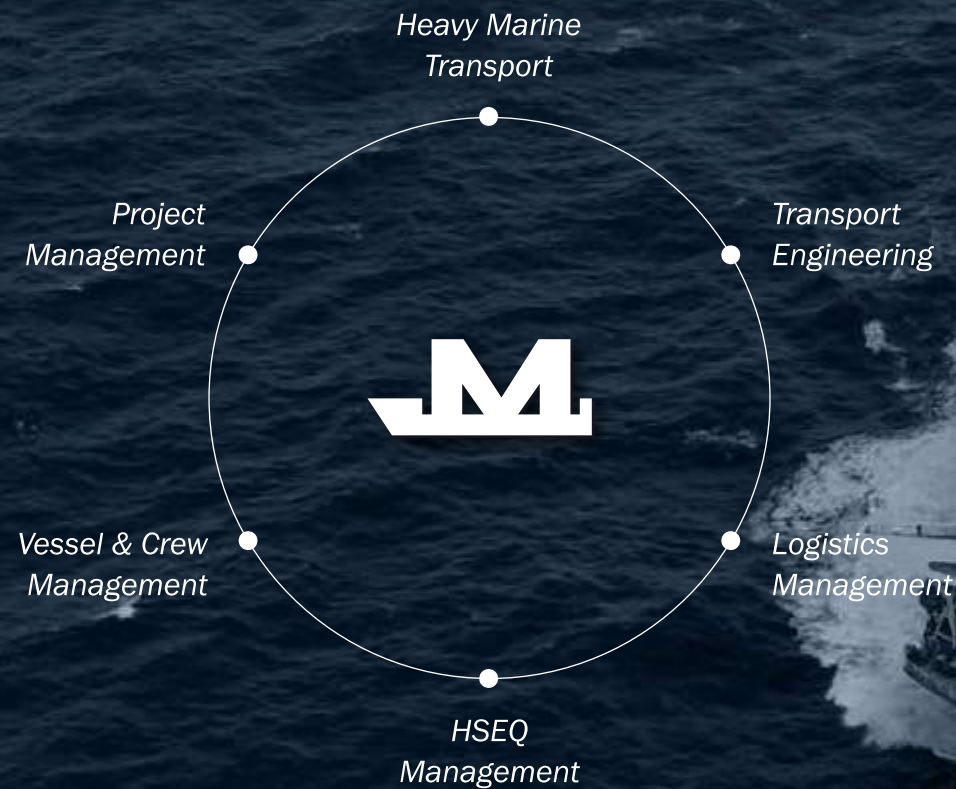
# MEGALINE

SPECIALIST IN HEAVY CARGO TRANSPORTATION



# COMPANY PROFILE

**Megaline** is dedicated to provide reliable **Heavy Marine Transport** solutions



Megaline, headquartered in Seoul, South Korea, is one of the leading service providers of heavy marine transportation. We own and operate 4 heavy transport vessels, which comprises of 3 world-class self-propelled deck carriers and 1 semi-submersible.

Founded in 2006, in just over a decade, we have successfully transformed ourselves to one of the most reliable global heavy marine transportation experts in the world. Through our project-orient approach, we have always serviced the requirement of our clients which is our utmost priority.

Megaline has also developed its own in-house engineering by bringing together engineering expertise from various industries and investing in leading engineering software, which gives us the ability to provide engineering solutions to our clients and project-specific requirements.



## Milestones

Interex Megaline foundation	2006.12
Long term chartered to DSME for ship block transportation	
<b>Mega Trust</b> delivery	2008.12
<b>Mega Innovation</b> delivery	2009.03
<b>Mega Passion</b> delivery	2010.06
<b>Mega Caravan</b> delivery	2011.04
<b>Mega Caravan 2</b> delivery	2011.09
On-hire for Chevron's Gorgon LNG project	2012.12
Awarded by Korean Government on Transportation & Installation industry study	2013.12
Nominated by Chevron for 'Best Vessel' & 'Quarantine Champion'	2014.02
Mega Passion completed Wheatstone project in Australia	2014.08
Awarded as Best Company for Safety Management & PSC control by Korean Register of Shipping	2015.06
Awarded as Best Company for Maritime Safety by Korean Ministry of Oceans and Fisheries	
Successfully completed 4 years contract of Gorgon LNG project	2016.02
Transported FPSO modules for Petrobras' TUPI Project to Brazil	2016.05
Completed Statoil's Gina Krog project at North Sea	2016.09
Awarded the transportation of wind farm jackets for the East Anglia Project	2017.06
Long term chartered to SHI for ship block transportation	2018.01
Awarded the transportation of modules for the Qatar NOC Gallaf Al-Shaheen Project	2019.04
Awarded the transportation of modules for Linde's Singapore New Pitch Gasification Plant Project	2019.07

# COMPANY PROFILE

## Cargo Type



### MODULES

Modularized cargoes for onshore industrial projects



### HULL STRUCTURES

Hull structures, vessel launch



### PORT EQUIPMENT

STS Cranes, RTGCs, Jib Cranes, Grab Unloaders



### SHIP BLOCKS

GIGA/MEGA ship blocks



### OFFSHORE STRUCTURES

Offshore Jackets & Flare Booms, Wind Farm Jackets



### FLOATING PLATFORMS

Drilling Rigs, SGS, Dry Tree Units, Tension-leg Platforms



### WIND ENERGY COMPONENTS

Transition Piles, Piles, Wind Blades

## Major Projects

### GORGON LNG

Modules, PAU/PARs, GTGs  
2,500 ~ 10,700 mt  
from Asia/Europe to Australia  
4 years charter for 3 vessels



### JOHAN SVERDRUP

Leg Extensions &  
Suction Caissons  
13,100 mt  
from UAE to Norway

### WHEATSTONE LNG

Steel Gravity Structure  
36,000 mt  
from Korea to Australia



### GINA KROG

Topside Modules, Flareboom  
Total 20,000 mt  
from Korea to North Sea



### TUPI FPSO

FPSO Modules  
Total 15,000 mt  
from Brazil to China



### AMRUN

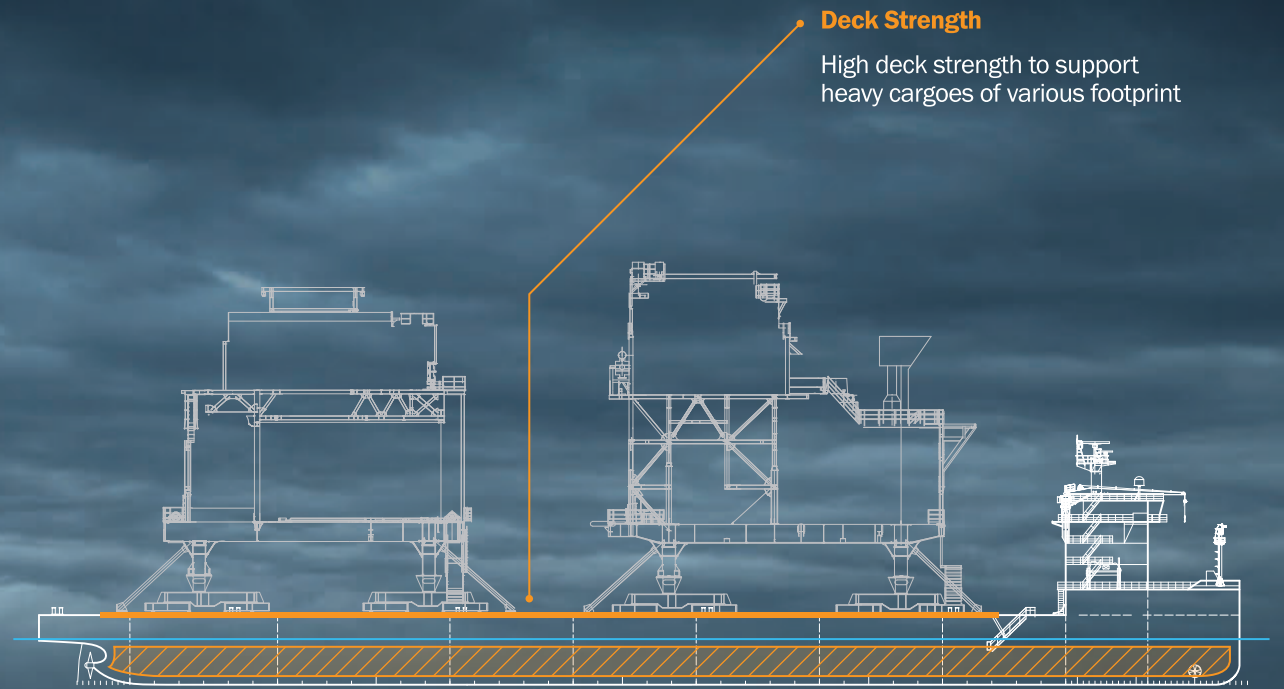
Onshore Modules  
2 shipments  
Total 5,123 mt

### EAST ANGLIA

Horizontal Windfarm Jackets  
8,500 mt  
from UAE to UK



# FLEET



**High Ballast Capacity**

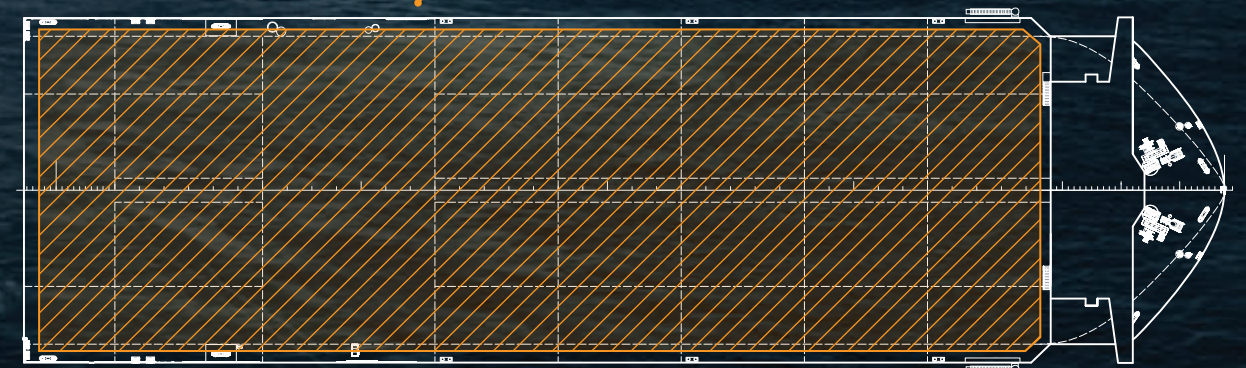
High ballasting capacities for operations in high tidal areas

- Mega Passion* 8 x 3,000 m<sup>3</sup>
- Mega Caravan* 4 x 2,500 m<sup>3</sup>
- Mega Caravan 2* 4 x 2,500 m<sup>3</sup>
- Mega Trust* 6 x 2,500 m<sup>3</sup>

**Large Free Deck**

Large deck space to accommodate any extremely oversized cargoes

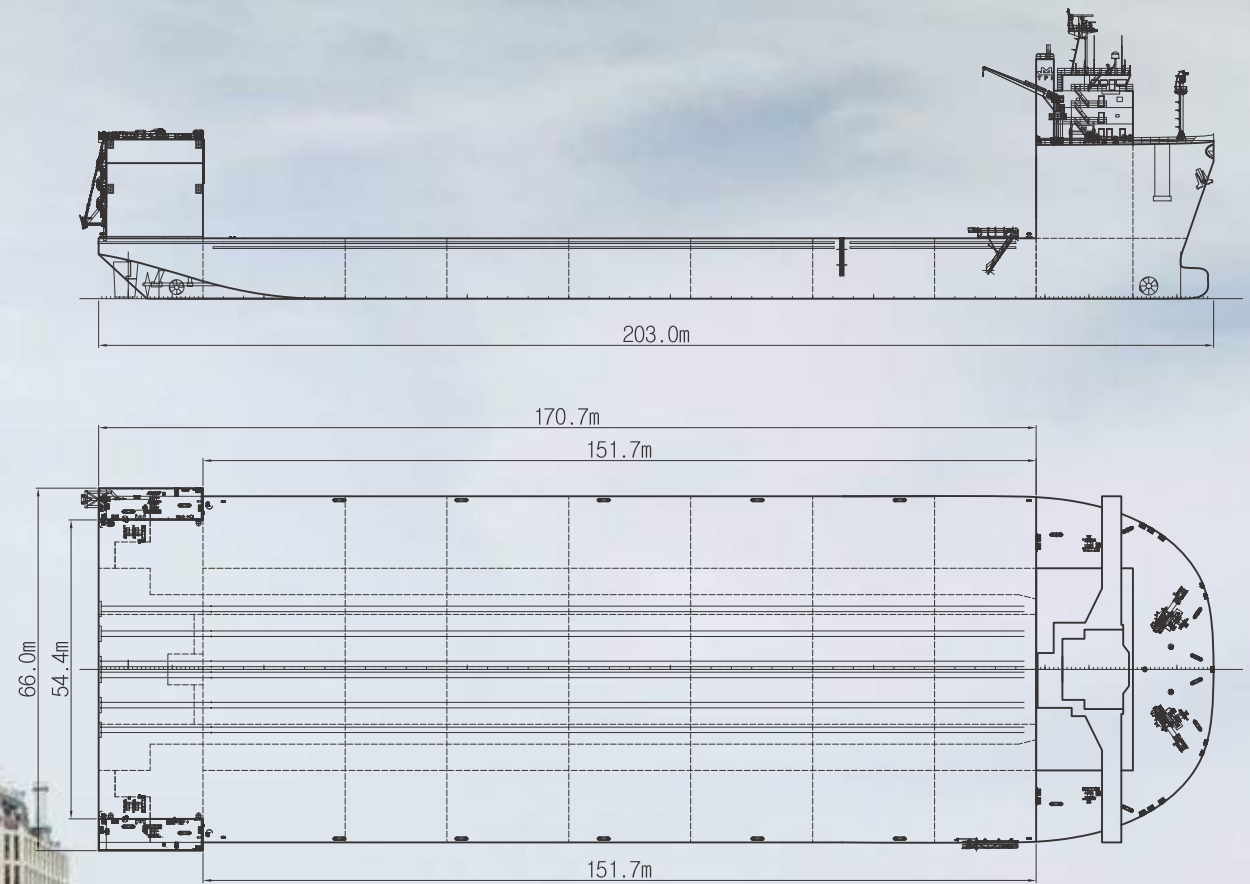
- Mega Passion* 170.7 x 63 m
- Mega Caravan* 140 x 54m
- Mega Caravan 2* 140 x 47 m
- Mega Trust* 124 x 50m



Our fleet of 4 world-class heavy marine transport vessels defines who we are, and what we are about. Since our establishment, Megaline vessels have continued to demonstrate its capabilities under many demanding circumstances, such as adverse weather conditions and project-specific challenges. However, time and time again, we have relentlessly redefined what is possible and found success on the projects we have served, in a safe and timely manner.

However, behind these massive vessels, rests a small group of professionals who make all this possible by systematically maintaining the vessels to meet international regulations and guidelines. This group consists of project management professionals, who not only ensure the reliability of our vessels but are also responsive to challenges during project execution. As service providers, we understand the need to be flexible at times but more importantly, we must be aligned with our client's targets and objectives. There is no denying we sometimes make mistakes, decisions regretful in hindsight, but at Megaline, we always pursue to learn from these mistakes and at the very core, it is this work ethic and methodology that defines the core asset of our organization, and ultimately, what sets us apart from the rest.

# MEGA PASSION

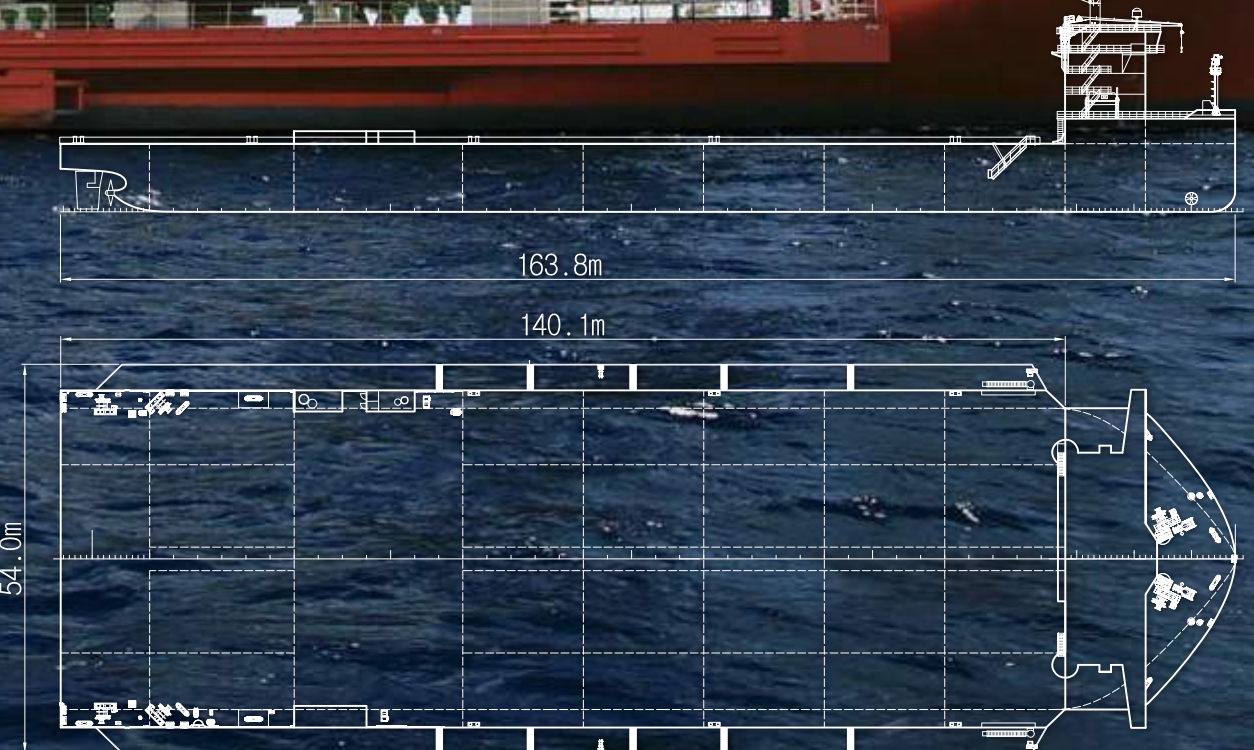


Built by	DSME, Korea
Built year	2010
L.O.A.	203.0 m
Breadth	63.0 m
Inner breadth	54.4 m
Free deck	170.7 m x 63.0 m
Depth	11.0 m
Draft (submerged)	8.2 m (23.7 m)
D.W.T.	52,300 ton
G.T.	41,986 ton
Speed	12.0 knot
Propulsion	4,000 kw x 2 set
Bunker tank	HFO 3,053 m <sup>3</sup> MDO 692 m <sup>3</sup>
Ballast capacity	8 pump 3,000 m <sup>3</sup> /hr

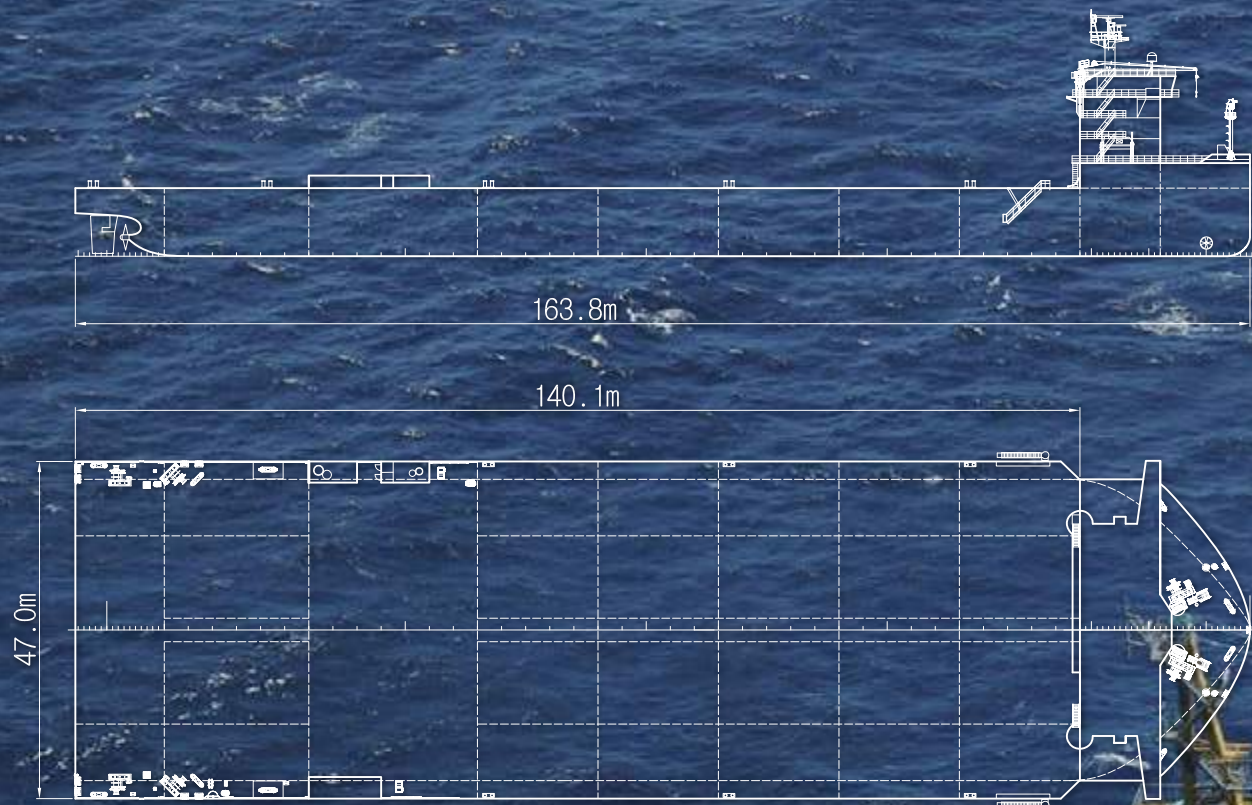
# MEGA CARAVAN



<i>Built by</i>	DSME, Korea
<i>Built year</i>	2011
<i>L.O.A.</i>	163.8 m
<i>Breadth</i>	54.0 m
<i>Free deck</i>	140.0 m x 54.0 m
<i>Depth</i>	10.5 m (wide deck)
<i>Draft</i>	6.0 m
<i>D.W.T.</i>	16,200 ton
<i>G.T.</i>	16,403 ton
<i>Speed</i>	12.0 knot
<i>Propulsion</i>	3,900 kw x 2 set
<i>Bunker tank</i>	HFO 1,679 m <sup>3</sup> MDO 340 m <sup>3</sup>
<i>Ballast capacity</i>	4 pump 2,500 m <sup>3</sup> /hr



# MEGA CARAVAN 2



Built by	DSME, Korea
Built year	2011
L.O.A.	163.8 m
Breadth	47.0 m
Free deck	140.0 m x 47.0 m
Depth	9.5 m
Draft	6.0 m
D.W.T.	17,700 ton
G.T.	16,403 ton
Speed	12.0 knot
Propulsion	3,900 kw x 2 set
Bunker tank	HFO 1,679 m <sup>3</sup> MDO 340 m <sup>3</sup>
Ballast capacity	4 pump 2,500 m <sup>3</sup> /hr





Built by	Shin-An, Korea
Built year	2008
L.O.A.	148.0 m
Breadth	50.0 m
Free deck	124.0 m x 50.0 m
Depth	9.5 m
Draft	5.8 m
D.W.T.	19,200 ton
G.T.	16,463 ton
Speed	12.0 knot
Propulsion	3,900 kw x 2 set
Bunker tank	HFO 1,093 m <sup>3</sup> MDO 199 m <sup>3</sup>
Ballast capacity	6 pump 2,500 m <sup>3</sup> /hr



# MEGA TRUST



# ENGINEERING

Guideline: DNV-OS, DNV-RP, GL-ND, ISO 19901-6, KR, ABS, AISC, OCIMF, IMO etc.

## FEASIBILITY STUDY

Provide our Clients with the suitable vessel

Stowage plan

Stability & structural analysis

Motion analysis

Vessel reinforcement study

## TRANSPORT ENGINEERING

Providing solutions to safe voyage

Voyage plan

Intact & damage stability

Local & global strength analysis

Grillage & seafastening design

## LOADING & DISCHARGING

Proper method for safe execution

Ballast plan

Mooring plan

Grillage installation

Loading & discharging supervision

## VOYAGE MONITORING

Vessel and cargo safety is of the utmost essential

Cargo safety

Transport route

Motion amplitude

Weather evaluation



## Top 5 Priorities



HEALTH



SAFETY



SECURITY



ENVIRONMENT



QUALITY

## HSEQ Management Policy

- Safe navigation
- Disaster, accident, environment pollution prevention
- Compliance to health, safety, environment – related laws and rules
- Evaluation of all discerned risk factors pertaining to the ship, personnel and environment
- Customer satisfaction management
- Continuous improvement and sustainment of the HSEQ management system

Megaline Management System is certified,  
 ISO 9001 - Quality Management System  
 ISO 14001 - Environment Management System  
 OHSAS 18001 - Occupational Health & Safety Management System



ISO 9001



ISO 14001



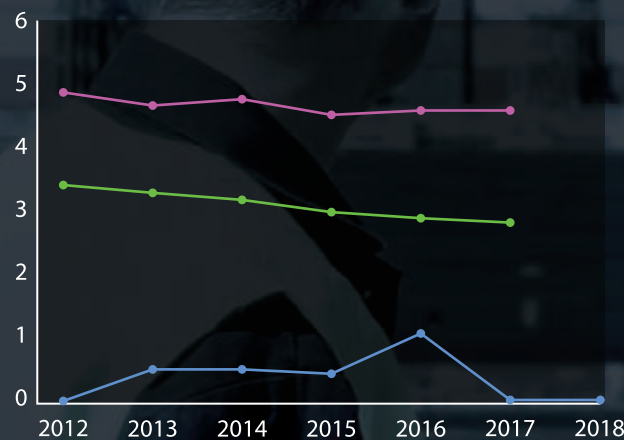
OHSAS 18001

## HSEQ Performance Statistics

### TRIR

Total Recordable Incident Rate based 200,000 hours

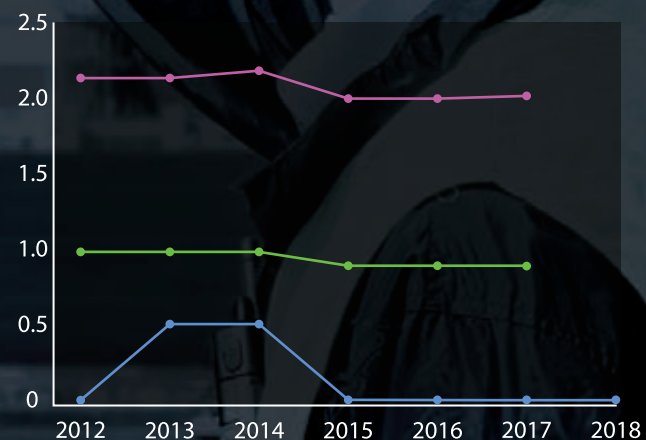
■ All Industry ■ Transport Industry ■ Megaline



### LTIR

Lost Time Incident Rate based 200,000 hours

■ All Industry ■ Transport Industry ■ Megaline



Website [www.megaline.kr](http://www.megaline.kr)  
 Inquiries [marketing@megaline.kr](mailto:marketing@megaline.kr)  
 Career [hr@megaline.kr](mailto:hr@megaline.kr)  
 General [tpi@megaline.kr](mailto:tpi@megaline.kr)

### Head office

Add: #1601, ACE High-end 3, 145 Gasan-digital 1-ro, Geumcheon-gu, Seoul, Republic of Korea

Tel: +82-2-2624-0710

Fax: +82-2-2624-0700

### Domestic Office

Add: #301, 12, Okpodaechep-ro, Geoje-si, Gyeongsangnam-do, Republic of Korea

Tel: +82-55-688-4190

Fax: +82-55-688-4199